



Geriatric Center of Excellence



# Welcome to the Positive Approaches to Dementia Care ECHO

January through June 2025

# Disclosure

This project is supported by the Health Resources and Services Administration (HRSA) of the U.S. Department of Health and Human Services (HHS) under grant number U1QHP53034, Geriatrics Workforce Enhancement Program, for \$1,001,457. This information or content and conclusions are those of the author and should not be construed as the official position or policy of, nor should any endorsements be inferred by, HRSA, HHS or the U.S. Government.

# Schedule

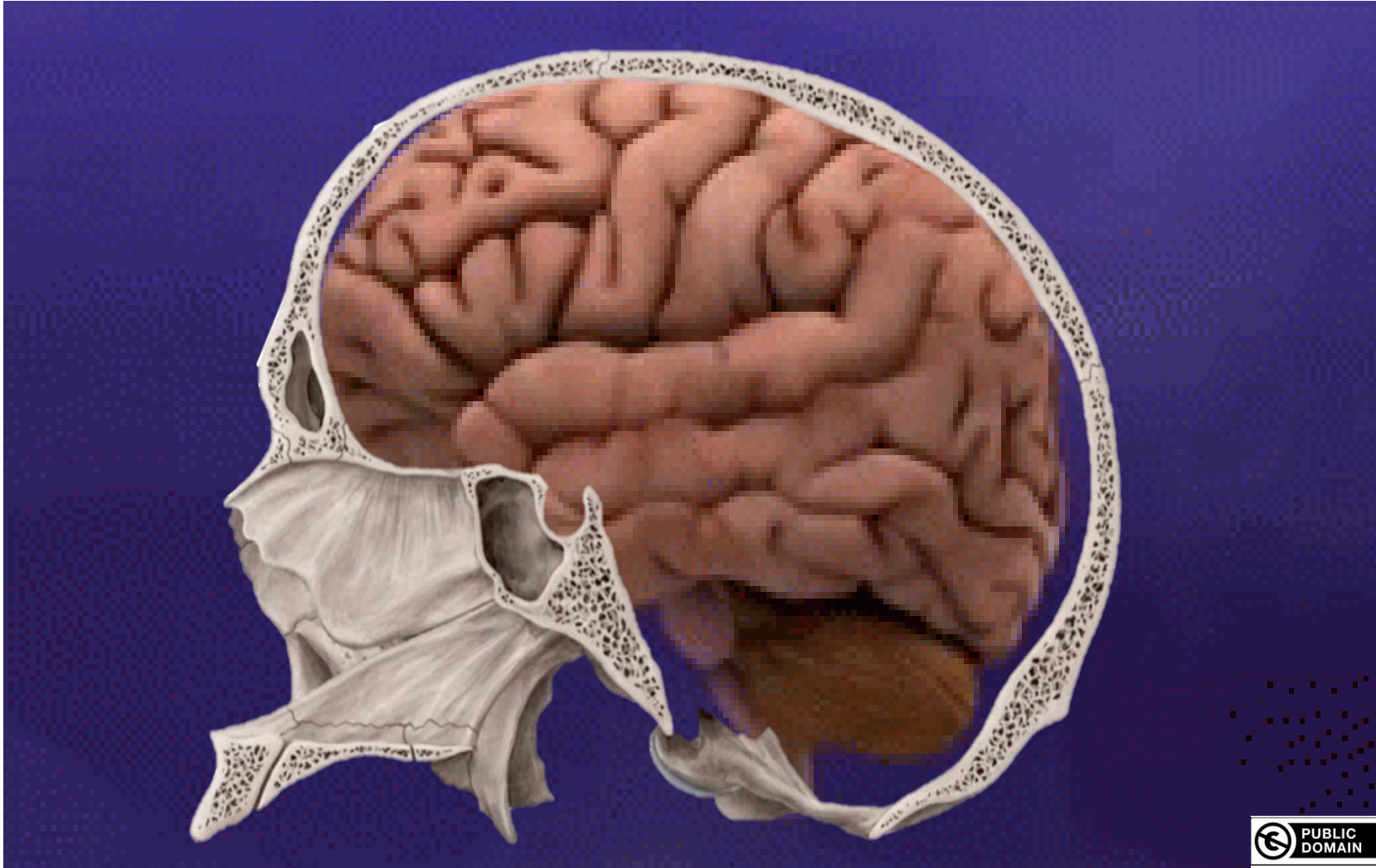
- Session 1 – Dementia: What's Retained?
- Session 2 – What is a Positive Approach to Care?
- Session 3 – Sensory Changes
- Session 4 – Communicating Effectively
- Session 5 – Personal Care
- Session 6 - TBD

# Dementia: What's Retained, Not Just What's Lost

Beth A. D. Nolan, Ph.D.

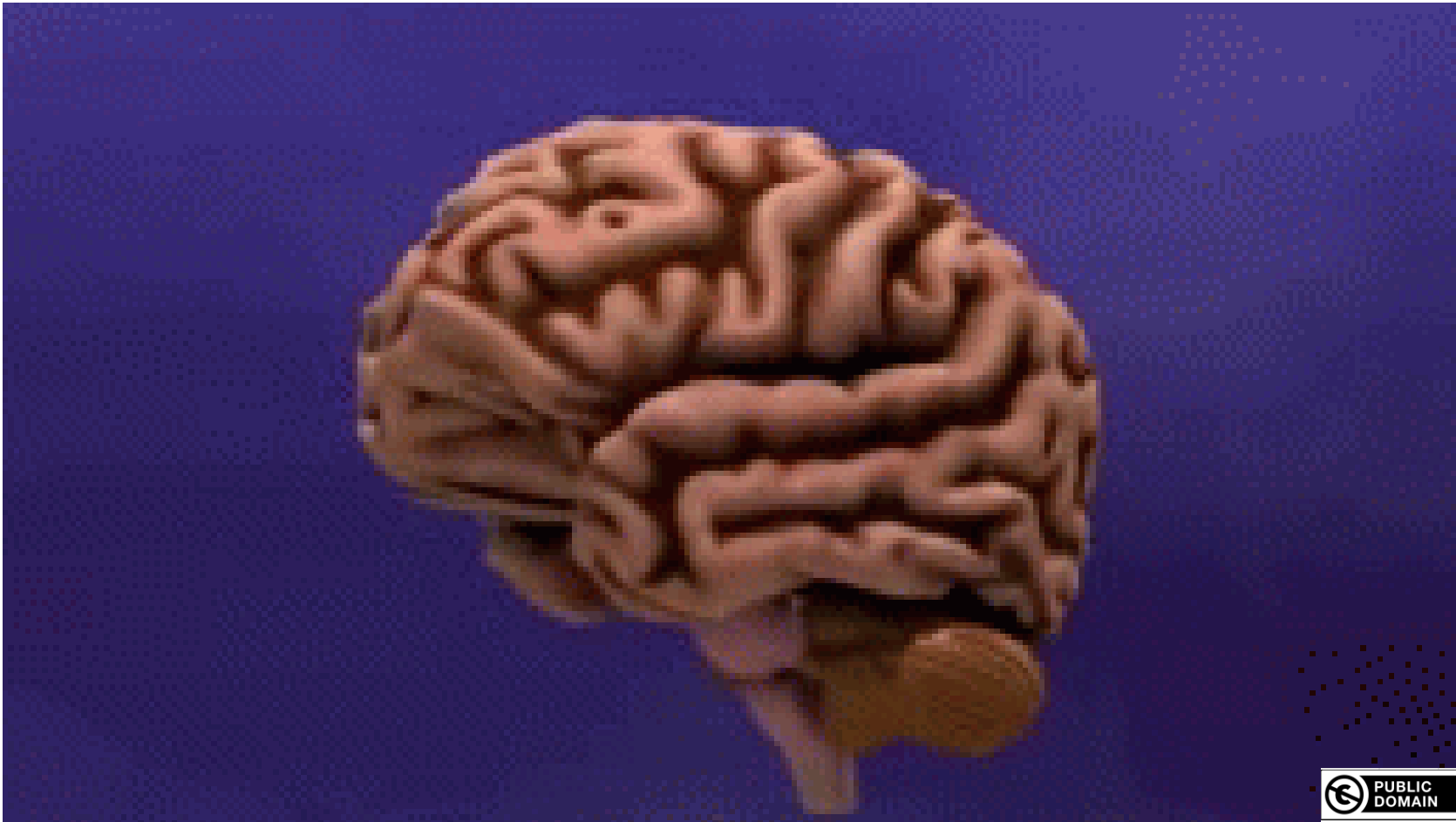
Chief Public Health Officer

Teepa Snow Positive Approach to Care Mentor



**As brain cells die the brain shrinks in size**

# Let's see what changes inside:



This work is in the public domain in the United States under the terms of [Title 17, Chapter 1, Section 105](#) of the [US Code](#).



Geriatric Center of Excellence



WHICH  
ONE?



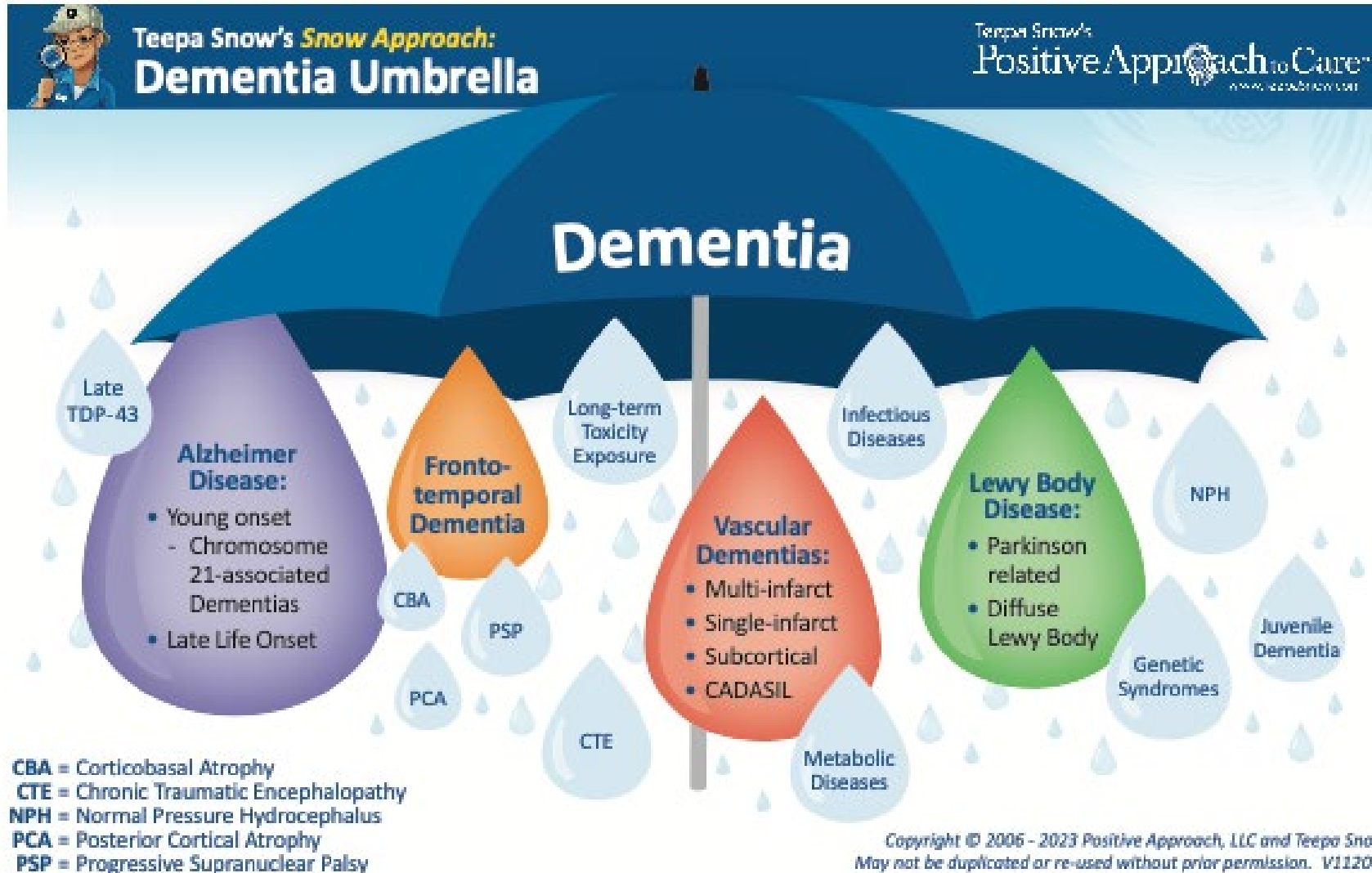
**Joanna  
Fix, PhD**

**Br John-Richard  
Pagan, MA-MFT, CG**





# A better understanding of the difference between dementia and Alzheimer...



# Four Truths About Dementia:

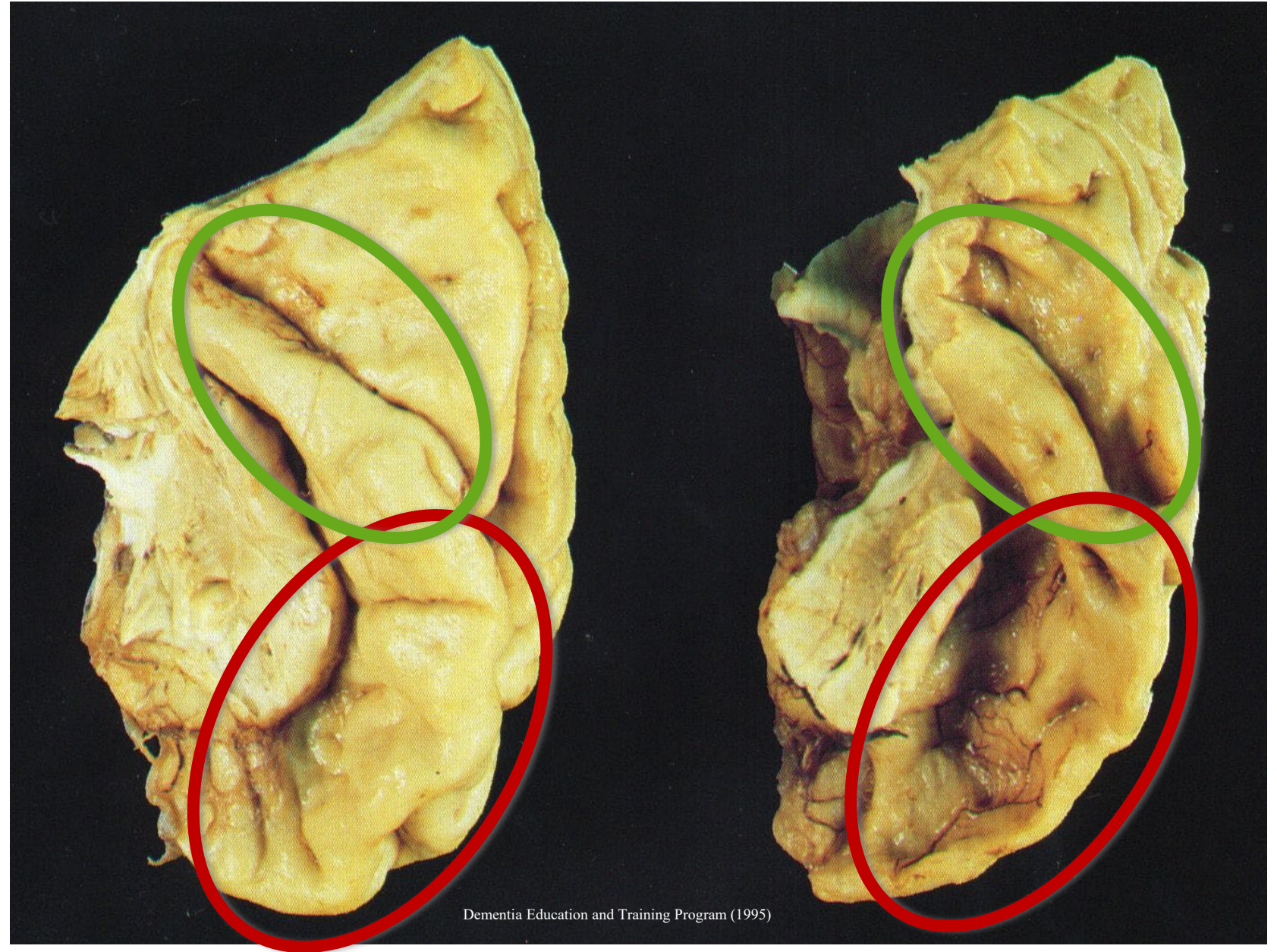
- 1. At least 2 parts of the brain are dying- one related to memory and another part**
- 2. It is chronic – can't be fixed**
- 3. It is progressive – it gets worse**
- 4. It is terminal – it will kill, eventually**

# Four More Truths About Dementia:

1. Things do not work the way they *used to* – abilities are changing
2. This is a *new normal* – can't go back to before
3. It is not going to *stabilize* and yet change can be dealt with – with support
4. Getting *support* that works is essential as things continue to change

**Hearing Sound  
Unchanged**

**BIG Language  
CHANGE**



## Limit Words – Keep it Straight Forward!

Visual matched WITH verbal using **Positive Action Starters**:

- **First, Reflect:** matched intensity with sincerity (if needed).
- **Short & Simple:** *It's about time for...* tap your watch/wrist.  
*Or Here's your socks.* Hold up sock.
- **Step by Step:** *Let's go this way.* Point.
- **Choice:** *Coffee or tea?* Raise coffee cup then tea bag.
- **Help:** *I could use your help.* Implied compliment on skill.
- **Try:** *Let's just try.* Pointing to the exercise band.

Acknowledge their response/reaction.... **And then WAIT!!!**

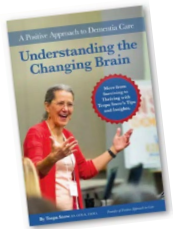
# Scan for Handouts

Or [www.teepasnow.com/presentations](http://www.teepasnow.com/presentations)



**Watch:** Teepa Snow on YouTube

<https://www.youtube.com/@teepasnowvideos>



**Read:** Understanding the Changing Brain

<https://shop.teepasnow.com/product/understanding-the-changing-brain/>



**Learn:** Accepting the Challenge Streaming Video

<https://shop.teepasnow.com/product/accepting-the-challenge-streaming/>



Geriatric Center of Excellence



# Welcome to the Positive Approaches to Dementia Care ECHO

*Session 2: What is a Positive Approach to Care?*

Wednesday February 19, 2025 2:00-3:00 p.m. (EST)

# What is a Positive Approach to Care?

**Teepa Snow, MS, OTR/L, FAOTA**

**Founder and CEO, Positive Approach to Care®**

**Co-Founder, Snow Approach Foundation, Inc.**



# The GEMS® States of Brain Change:



Sapphire State: Typical Aging

Diamond State: Clear, Sharp, Faceted, Highly Structured

Emerald State: On the Go with Repeating Patterns

Amber State: Caution Light, Caught in a Moment of Time

Ruby State: Red Light on Skills, Hidden Depths

Pearl State: Hidden Within in a Shell, Quiet Beauty

# Why Use the GEMS® States?

They help us:

- Understand the different brain states that we all experience, so we may recognize our own state and its impact on our interactions
- Get beyond the terms *dementia* and *Alzheimer* and speak with less negativity and stereotyping
- Enable us to offer effective support for an individual's specific brain state
- Focus on abilities, rather than just disabilities

# Sapphire State:



- Typical aging brain
- Able to be flexible and adaptable
- Able to consider the perspectives of others
- Able to support the other GEMS States



# Diamond State:



- Sharp, hard, rigid, inflexible, can cut
- Many facets, still often clear, can really shine
- Are usually either *joiners* or *loners*
- Can complete personal care in familiar place
- Usually can follow simple, prompted schedules
- Misplaces things and can't find them
- Resents takeover or bossiness
- Notices other people's misbehavior and mistakes
- Varies in self-awareness
- Uses old routines and habits
- Controls important roles and territories, uses refusals



# Emerald State:



- Changing color
- Not as clear or sharp, more vague
- On the go, need to *do*
- Flaws may be hidden
- Time traveling is common
- Are usually *doers* or *supervisors*
- Do what is seen, but miss what is not seen
- Must be in control, but not able to do it correctly
- Do tasks over and over, or not at all



# Amber State:



- Amber Alert - Caution!
- Caught in a moment
- All about sensation and sensory tolerance, easily over or under-stimulated
- May be private and quiet, or public and noisy
- Limited safety awareness
- Often focused on their own needs and wants
- Lots of touching, handling, tasting, mouthing, manipulating
- Explorers, get into things, invade space of others
- Do what they like and avoid what they do not like



# Ruby State:



- Big, repetitive, strong movements are possible
- Rhythm: can sing, hum, pray, sway, or dance
- Notices exaggerated facial expressions
- Can react to emotion in tone of voice
- Limited skill in mouth, eyes, fingers, and feet
- Can mimic or copy big actions and motions
- Monocular vision – loss of depth perception
- Balance and coordination very limited
- Basic needs will require monitoring and support



# Pearl State:



- Hidden in a shell: still, quiet, easily lost
- Beautiful and layered
- Spends much time asleep or unaware
- Unable to move, bed or chairbound, frequently falls forward or to side
- May cry out or mumble often, increases vocalizations with distress
- Can be difficult to calm, hard to connect with
- Knows familiar from unfamiliar
- Primitive reflexes
- The end of the journey is near, multiple systems failing
- Connections between the physical and sensory world are less strong but we are often the bridge





Teepa Snow's GEMS® State Model allows us to recognize how every brain can change based on internal and external factors. While dementia will cause chemical and physical changes to one's brain, other factors, such as discomfort, stress, or hunger, can affect all of our abilities in the moment. Observing these changes and recognizing what abilities are available in this moment are key to connecting and offering the *just right* support.



**Sapphire**

True blue  
Healthy brain  
Normal aging  
Flexible  
Adaptable  
Optimal cognition  
Can vary pace  
Sometimes misses a word  
Can provide support for other GEMS  
States with proper self-care and support  
Less peripheral awareness with age



**Diamond**

Clear – Sharp  
Many facets  
Lives by habit and routine  
Likes familiar, dislikes change  
Blames or dismisses errors  
Short delays possible  
Word-finding changes  
Can cut and shine  
Scuba vision



**Emerald**

Green  
On the go with purpose  
Flawed  
Seeks independence or connections  
Repeats  
Misses details  
One thing at a time  
Misses or skips words  
Travels in time and place  
Binocular vision



**Amber**

Changing yellow  
Caught in a moment of time  
More curious than cautious  
Focused on sensory needs  
Lives in the moment  
Copies actions, not tasks  
Highly varied response speed  
Language challenged  
Resists dislikes, seeks likes  
Can confuse objects



**Ruby**

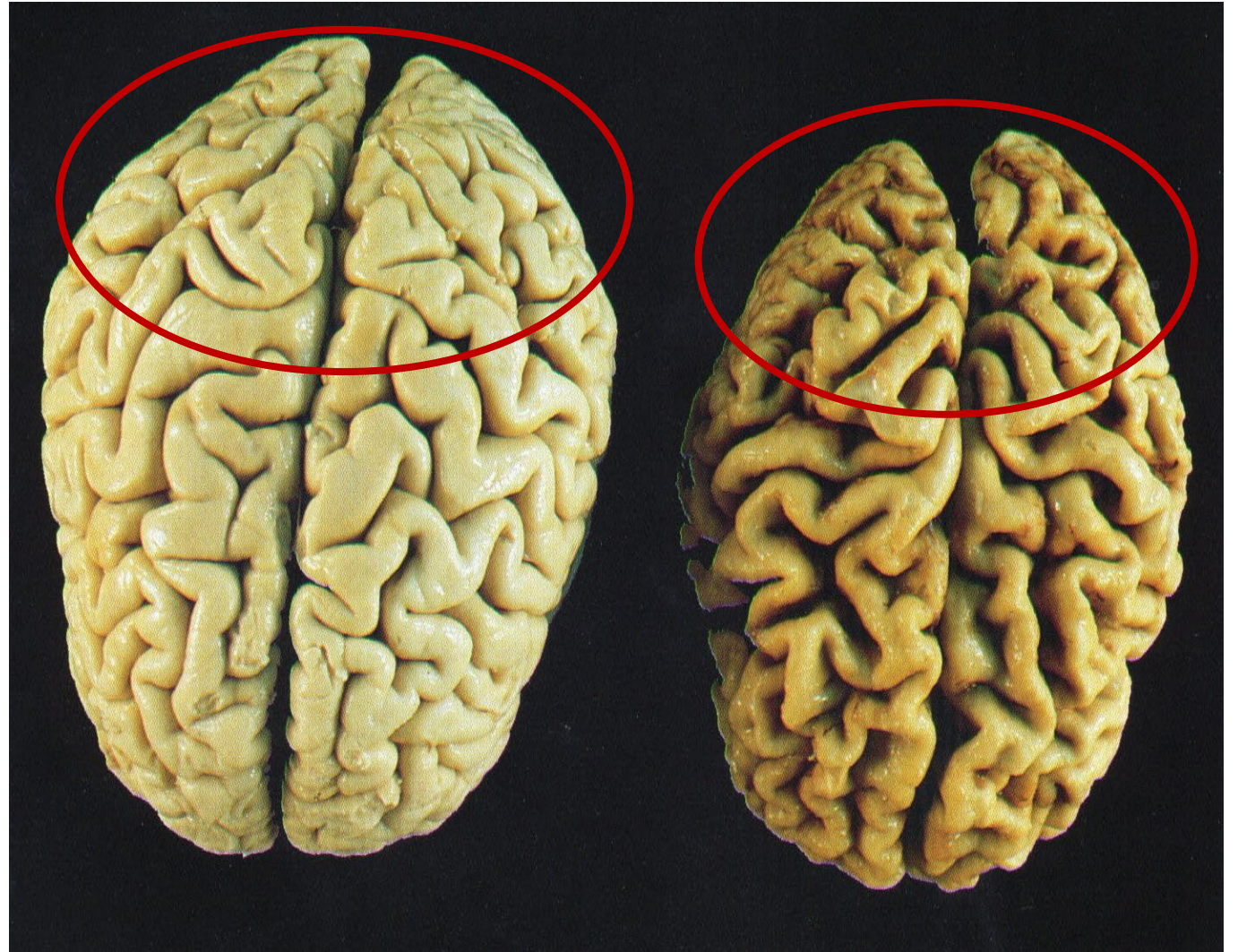
Strong red  
Retains strength, not skills  
Big/strong actions  
Has rhythm  
Notices tone of voice  
In motion or still  
Typically very slowed  
Chatty or silent  
Imitates actions  
Monocular vision



**Pearl**

Hidden in a shell  
Ruled by reflexes  
Short moments of connection  
Mostly immobile  
Expresses unmet needs with distress  
Reacts to touch  
Extended delays are common  
Single sounds or words  
Can recognize familiar and liked  
Limited visual regard

# Vision Center: Big Changes



# Visual Field Changes by GEMS State:

Sapphire State: Loss of Peripheral Awareness with Typical Aging

Diamond State: Scuba Mask/Tunnel Vision

Emerald State: Binocular Vision

Amber State: Binocular + Object Confusion

Ruby State: Monocular Vision

Pearl State: Loss of Visual Regard



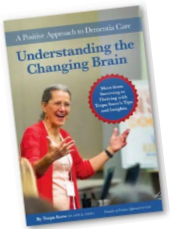
# Scan for Handouts

Or [www.teepasnow.com/presentations](http://www.teepasnow.com/presentations)



**Watch:** Teepa Snow on YouTube

<https://www.youtube.com/@teepasnowvideos>



**Read:** Understanding the Changing Brain

<https://shop.teepasnow.com/product/understanding-the-changing-brain/>



**Learn:** Accepting the Challenge Streaming Video

<https://shop.teepasnow.com/product/accepting-the-challenge-streaming/>